

DEUTZ

POWER SOLUTIONS



DPS OPEN GENSET 50 HZ / 60 HZ



The engine company.



DEUTZ POWER SOLUTIONS **OPEN FRAME**

GENSETS 50HZ / 60HZ

Our heavy-duty DEUTZ POWER SOLUTIONS gensets have been designed to meet market requirements and offer world-class quality, fuel economy, reliability and performance.

All of our complete generator sets are manufactured and tested according to stringent DEUTZ standards. Customers can be assured of their quality, performance and durability.

Our DPS genset series are reliable, fuel efficient and supported by the world wide DEUTZ service network.

DPS OPEN FRAME GENSETS:

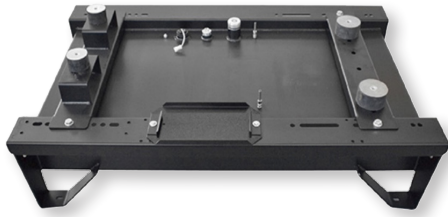
STANDARD CONFIGURATION:

- DEUTZ G-Drive engine (made in Germany)
- Stamford brushless AVR electronic-controlled generator
- Digital Controller DSE 4520 for standby application
- Electronic governor, standard on models 145, 230 and 280
- Battery charger
- Base-mounted fuel tank
- Autonomy min 8 hs @ 75% PRP
- Industrial silencer, delivery (loose)
- Battery + isolator
- Operation manual

OPTIONS:

- Engine pre-heater kit
- Cold climate starting kit
- Electronic governor
- Automatic transfer switch (loose)
- Extended capacity fuel tanks
- Leak retention basin
- Engine oil extraction pump

Features and Benefits:

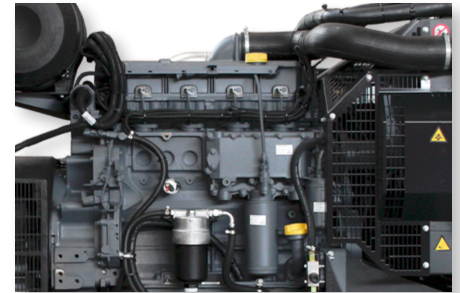


BASE FRAME WITH INTEGRATED FUEL TANK

The DPS OG series is equipped with a T-base frame with strong support feet to facilitate forklift handling and stabilizing the unit on uneven ground. The support feet have holes to permanently fasten the generating set on site. Also includes fuel and lubricant-resistant, rubber anti-vibration mountings and battery supports.

TOUGH, RELIABLE AND EFFICIENT DEUTZ ENGINE

Mechanical injection system with individual pump-line-injector system (only 2013 with common rail). Over 65 kVA electronic governor as standard and below that as an option. Excellent load response (G2 up to 180 kVA and G3 over it). Operation with fuels with 500 ppm sulphur content is allowed. Over 1000 ppm possible with some precautions. Durable design in main components.

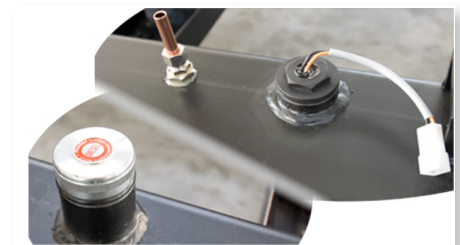


FUEL SAVINGS AND LOW OPERATIVE COSTS

Standard 500-hrs maintenance interval. Up to 1000 hrs for sub 65 kVA as option. Optimized for fuel consumption.

PAYING ATTENTION TO THE DETAILS

Filler cap, fuel gauge, draining caps and sleeves to connect to any accessories.



DURABILITY

DEUTZ is renowned for its durability, and these stringent standards apply to all design aspects of DPS gensets. High-quality, powder-coated painting ensures an enduring appearance over long periods.

CONTROL PANEL



The OG range control panel features:

- On/Off Key
- Emergency stop button
- Control module DEEP SEA® 4520 MKII
- Primary brand circuit breakers



DEEP SEA® 4520 MKII

DSE4520 is a compact Auto Mains (Utility) Failure Control Module. Monitoring an extensive number of engine parameters, the module displays warning, shut-down and engine status information on the LCD screen.

For information about additional features, please contact your local DEUTZ partner or email engine-accessories@deutz.com

RATING DEFINITIONS

Prime Rating (PRP)

These ratings are applicable for supplying continuous electrical power (at variable load) in lieu of commercially purchased power. Operating at a max mean load factor at 80% of nominal power. There is no limitation on the annual hours of operation. DPS gensets deliver up to 10% overload power for one hour on a 12 hour period.

Standby Rating (LTP)

These ratings are applicable for supplying continuous electrical power (at variable load) in the event of utility power failure. No overload is permitted on these ratings. The alternator on this model is peak continuous rated (as defined in ISO 8528-3). Max operating hours 500 a year.

Standard Reference Conditions

Standard reference conditions include a 25°C (77°F) air inlet temp, 100m (328 ft) A.S.L. 30% humidity. Ratings in accordance with ISO 8528. Power factor $\cos \phi$ 0.8. For de-rating factors depending on altitude and temperature please contact your DEUTZ® partner (for example TCD 2013 does not de-rate up to 40°C and 1500 m A.S.L.).

WARRANTY

All equipment carries the DEUTZ standard manufacturer's warranty. For details on warranty coverage, please contact your responsible sales partner or visit our website: www.deutzamericas.com



Technical Data:

DPS OPEN GENSET 50 HZ

| Model | DPS | 25 OG | 35 OG | 50 OG | 65 OG | 110 OG | 145 OG | 175 OG | 230 OG | 280 OG |
|--------------------------------------|-----------------|-------------|-------------|-------------|-------------|---------------|---------------|---------------|---------------|---------------|
| Rated speed | rpm | 1500 | 1500 | 1500 | 1500 | 1500 | 1500 | 1500 | 1500 | 1500 |
| Rated voltage, 3 phases | Voltage options | 400/380 | 400/380 | 400/380 | 400/380 | 400/380 | 400/380 | 400/380 | 400/380 | 400/380 |
| Rated power (PRP), 3 phases | kVA | 20 / 18.3 | 30/ 30 | 40 / 36.6 | 60/ 55.8 | 100 / 100 | 130 / 130 | 160 / 160 | 200.0 / 200.0 | 250.0 / 250.0 |
| Rated power (LTP), 3 phases | kVA | 21.3 / 20.1 | 33.0/ 33.0 | 44.0 / 40.3 | 62.0 / 62.0 | 110.0 / 110.0 | 137.0 / 133.0 | 172.0 / 171.0 | 220.0 / 220.0 | 275.0 / 266.0 |
| Rated power (PRP), 3 phases | kW | 16 / 14.6 | 24 / 24 | 32 / 29.3 | 48/ 44.6 | 80 / 80 | 104 / 104 | 128 / 128 | 160.0 / 160 | 200.0 / 200.0 |
| Rated power (LTP), 3 phases | kW | 17.0 / 16.1 | 26.4 / 26.4 | 35.2 / 32.2 | 49.6 / 49.6 | 88.0 / 88.0 | 109.6 / 106.4 | 137.6 / 136.9 | 176.0 / 176.0 | 220.0 / 212.8 |
| Nominal current (LTP) 400V, 3 phases | A | 31 | 48 | 64 | 90 | 158 | 198 | 248 | 317 | 397 |
| Engine | | | | | | | | | | |
| Make | | DEUTZ | DEUTZ | DEUTZ | DEUTZ | DEUTZ | DEUTZ | DEUTZ | DEUTZ | DEUTZ |
| Model | | F3M2011 | F4M2011 | BF4M2011 | BF4M2011C | BF4M1013EC | BF4M1013FC | BF6M1013EC | BF6M1013FCG3 | TCD2013L064V |
| Rated COP/PRP mechanical power | kW | 19.3 | 27.8 | 37.1 | 53.1 | 116.1 | 137.7 | 153.0 | 180.9 | 225.0 |
| Rated LTP mechanical power | kW | 21.4 | 30.9 | 41.2 | 59.0 | 129.0 | 153.0 | 170.0 | 201.0 | 250.0 |
| Emissions | Cert | Tier 0-2 | Tier 0-2 | Tier 0-2 | Tier 0-2 | Tier 0-2 | Tier 0-2 | Tier 0-2 | Tier 0-2 | Tier 3 |
| Cooling system | | oil | oil | oil | oil | water | water | water | water | water |
| Speed governing | type | mechanical | mechanical | mechanical | mechanical | mechanical | electronic | mechanical | electronic | electronic |
| | class | G2 | G2 | G2 | G2 | G2 | G2 | G2 | G3 | G3 |
| Number of cylinders | | 3 | 4 | 4 | 4 | 4 | 4 | 6 | 6 | 6 |
| Engines configuration | | IL | IL | IL | IL | IL | IL | IL | IL | IL |
| Displacement | ltr | 2,3 | 3,1 | 3,1 | 3,1 | 4,8 | 4,8 | 7,2 | 7,2 | 7,8 |
| Electrical equipment | V/dc | 12 | 12 | 12 | 12 | 12 | 12 | 12 | 12 | 24 |
| Generator | | | | | | | | | | |
| Generator | Make | Stamford | Stamford | Stamford | Stamford | Stamford | Stamford | Stamford | Stamford | Stamford |
| Generator | Model | S0L2-G | S1L2-K | S1L2-K | S1L2-Y | UCI274C | UCI274E | UCI274F | UCI274H | UCDI274K |
| Connection | | Series star | Series star | Series star | Series star | Series star | Series star | Series star | Series star | Series star |
| Phases | | 3PH + N | 3PH + N | 3PH + N | 3PH + N | 3PH + N | 3PH + N | 3PH + N | 3PH + N | 3PH + N |
| Terminals | Number | 12 | 12 | 12 | 12 | 12 | 12 | 12 | 12 | 12 |
| Winding | Config | 311 | 311 | 311 | 311 | 311 | 311 | 311 | 311 | 311 |
| Protection | IP | 23 | 23 | 23 | 23 | 23 | 23 | 23 | 23 | 23 |
| Electronic regulator | Model | AS540 | AS540 | AS540 | AS540 | AS540 | AS540 | AS540 | AS540 | AS540 |
| Precision | % | ± 1.0 | ± 1.0 | ± 1.0 | ± 1.0 | ± 1.0 | ± 1.0 | ± 1.0 | ± 1.0 | ± 1.0 |
| Control Panel | | | | | | | | | | |
| Control panel | metal box | Mounted | Mounted | Mounted | Mounted | Mounted | Mounted | Mounted | Mounted | Mounted |
| Control module | Deepsea | 4520 MKII | 4520 MKII | 4520 MKII | 4520 MKII | 4520 MKII | 4520 MKII | 4520 MKII | 4520 MKII | 4520 MKII |
| Automatic start | Deepsea | INC | INC | INC | INC | INC | INC | INC | INC | INC |
| On/off key | | INC | INC | INC | INC | INC | INC | INC | INC | INC |
| Emergency stop button | | INC | INC | INC | INC | INC | INC | INC | INC | INC |
| Auto transfer switch | | OPT | OPT | OPT | OPT | OPT | OPT | OPT | OPT | OPT |
| Battery charger | | INC | INC | INC | INC | INC | INC | INC | INC | INC |
| Circuit breaker | | INC | INC | INC | INC | INC | INC | INC | INC | INC |
| Consumption | | | | | | | | | | |
| Fuel (75% of load) | l/h | 4.0 | 5.7 | 7.6 | 10.4 | 18.4 | 21.3 | 27.4 | 34.2 | 43.4 |
| Fuel (75% of load) | USG/h | 1.1 | 1.5 | 2.0 | 2.8 | 4.9 | 5.6 | 7.2 | 9.0 | 11.5 |
| Fuel (75% of load) | g/kwh | 218 | 217 | 215 | 206 | 211 | 203 | 208 | 209 | 225 |
| Silencer | | | | | | | | | | |
| Exhaust silencer | loose | INC | INC | INC | INC | INC | INC | INC | INC | INC |

The data in this brochure is for information purposes only and are not binding values.
The data in the quotation is definitive.

The engine company.

DPS OPEN GENSET 60 HZ

| Model | DPS | 25 OG | 35 OG | 50 OG | 65 OG | 110 OG | 145 OG | 175 OG | 230 OG | 280 OG |
|--------------------------------------|-----------------|-------------|-------------|-------------|-------------|---------------|---------------|---------------|---------------|---------------|
| Rated speed | rpm | 1800 | 1800 | 1800 | 1800 | 1800 | 1800 | 1800 | 1800 | 1800 |
| Rated voltage, 3 phases | Voltage options | 220/208 | 220/208 | 220/208 | 220/208 | 220/208 | 220/208 | 220/208 | 220/208 | 220/208 |
| Rated power (PRP), 3 phases | kVA | 21.2 / 20.9 | 35.7 / 35.7 | 48.0 / 48.0 | 63.0 / 63.0 | 111 / 111 | 135 / 131.3 | 167.5 / 160.0 | 225.0 / 225.0 | 252.0 / 252.0 |
| Rated power (LTP), 3 phases | kVA | 24.6 / 23.2 | 37.5 / 37.5 | 50.0 / 50.0 | 66.0 / 66.0 | 117.0 / 117.0 | 143.0 / 142.5 | 176.3 / 175.0 | 250.0 / 250.0 | 280.0 / 280.0 |
| Rated power (PRP), 3 phases | kW | 17.7 / 16.7 | 28.6 / 28.6 | 38.4 / 38.4 | 50.4 / 50.4 | 88.8 / 88.8 | 108.0 / 105.0 | 134.0 / 128.0 | 180.0 / 180.0 | 201.6 / 201.6 |
| Rated power (LTP), 3 phases | kW | 19.7 / 18.6 | 30.0 / 30.4 | 40.0 / 40.0 | 52.8 / 52.8 | 93.6 / 93.6 | 114.4 / 114.0 | 141.0 / 140.0 | 200.0 / 200.0 | 224.0 / 224.0 |
| Nominal current (LTP) 200V, 3 phases | A | 65 | 98 | 131 | 173 | 307 | 375 | 462 | 656 | 735 |
| Engine | | | | | | | | | | |
| Make | | DEUTZ | DEUTZ | DEUTZ | DEUTZ | DEUTZ | DEUTZ | DEUTZ | DEUTZ | DEUTZ |
| Model | | F3M2011 | F4M2011 | BF4M2011 | BF4M2011C | BF4M1013EC | BF4M1013FC | BF6M1013EC | BF6M1013FCG3 | TCD2013L064V |
| Rated COP/PRP mechanical power | kW | 22.1 | 29.0 | 38.2 | 54.0 | 99 | 122.4 | 146.7 | 202.5 | 236.7 |
| Rated LTP mechanical power | kW | 24.5 | 35.2 | 47.3 | 63.6 | 110 | 136.0 | 163.0 | 225.0 | 263.0 |
| Emissions | Cert | Tier 0-2 | Tier 0-2 | Tier 0-2 | Tier 0-2 | Tier 0-2 | Tier 0-2 | Tier 0-2 | Tier 0-2 | Tier 3 |
| Cooling system | | oil | oil | oil | oil | water | water | water | water | water |
| Speed governing | type | mechanical | mechanical | mechanical | mechanical | mechanical | electronic | mechanical | electronic | electronic |
| | class | G2 | G2 | G2 | G2 | G2 | G2 | G2 | G2 | G2 |
| Number of cylinders | | 3 | 4 | 4 | 4 | 4 | 6 | 6 | 6 | 6 |
| Engines configuration | | IL | IL | IL | IL | IL | IL | IL | IL | IL |
| Displacement | ltr | 2,3 | 3,1 | 3,1 | 3,1 | 4,8 | 7,2 | 7,2 | 7,2 | 7,8 |
| Electrical equipment | V/dc | 12 | 12 | 12 | 12 | 12 | 12 | 12 | 12 | 24 |
| Generator | | | | | | | | | | |
| Generator | Make | Stamford | Stamford | Stamford | Stamford | Stamford | Stamford | Stamford | Stamford | Stamford |
| Generator | Model | S0L2-G | S1L2-K | S1L2-K | S1L2-Y | UC1274C | UC1274D | UC1274E | UCI274H | UCDI274K |
| Connection | | Series star | Series star | Series star | Series star | Series star | Series star | Series star | Series star | Series star |
| Phases | | 3PH + N | 3PH + N | 3PH + N | 3PH + N | 3PH + N | 3PH + N | 3PH + N | 3PH + N | 3PH + N |
| Terminals | Number | 12 | 12 | 12 | 12 | 12 | 12 | 12 | 12 | 12 |
| Winding | Config | 311 | 311 | 311 | 311 | 311 | 311 | 311 | 311 | 311 |
| Protection | IP | 23 | 23 | 23 | 23 | 23 | 23 | 23 | 23 | 23 |
| Electronic regulator | Model | AS540 | AS540 | AS540 | AS540 | AS540 | AS540 | AS540 | AS540 | AS540 |
| Precision | % | 10 | 10 | 10 | 10 | 10 | 10 | 10 | 10 | 10 |
| Control Panel | | | | | | | | | | |
| Control panel | metal box | Mounted | Mounted | Mounted | Mounted | Mounted | Mounted | Mounted | Mounted | Mounted |
| Control module | Deepsea | 4520 MKII | 4520 MKII | 4520 MKII | 4520 MKII | 4520 MKII | 4520 MKII | 4520 MKII | 4520 MKII | 4520 MKII |
| Automatic start | Deepsea | INC | INC | INC | INC | INC | INC | INC | INC | INC |
| On/off key | | INC | INC | INC | INC | INC | INC | INC | INC | INC |
| Emergency stop button | | INC | INC | INC | INC | INC | INC | INC | INC | INC |
| Auto transfer switch | | OPT | OPT | OPT | OPT | OPT | OPT | OPT | OPT | OPT |
| Battery charger | | INC | INC | INC | INC | INC | INC | INC | INC | INC |
| Circuit breaker | | INC | INC | INC | INC | INC | INC | INC | INC | INC |
| Consumption | | | | | | | | | | |
| Fuel (75% of load) | l/h | 4.0 | 5.7 | 7.6 | 10.4 | 18.4 | 21.3 | 27.4 | 34.2 | 43.4 |
| Fuel (75% of load) | USG/h | 1.1 | 1.5 | 2.0 | 2.8 | 4.9 | 5.6 | 7.2 | 9.0 | 11.5 |
| Fuel (75% of load) | g/Kwh | 218 | 217 | 215 | 206 | 211 | 203 | 208 | 209 | 225 |
| Silencer | | | | | | | | | | |
| Exhaust silencer | loose | INC | INC | INC | INC | INC | INC | INC | INC | INC |

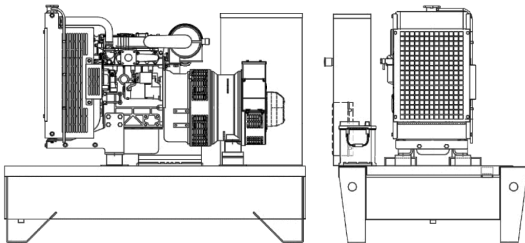


DPS OPEN GENSET 50 HZ / 60HZ

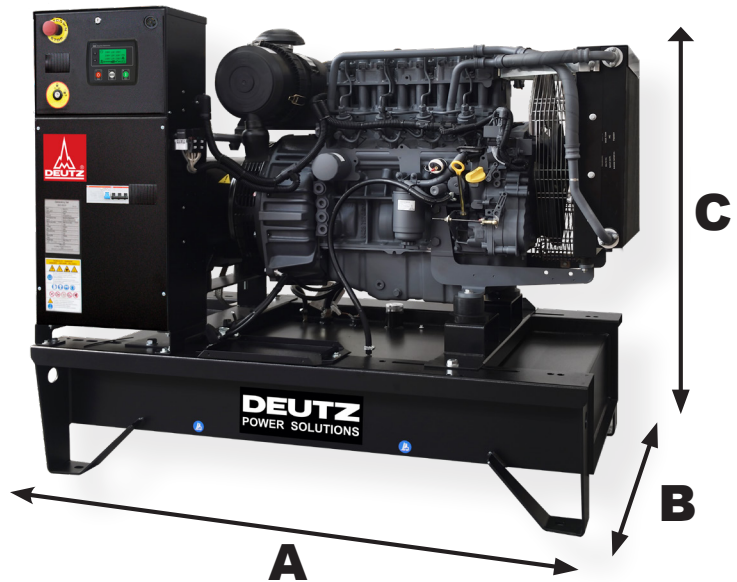
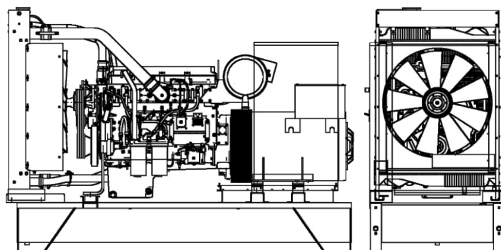
| Model | DPS | 25 OG | 35 OG | 50 OG | 65 OG | 110 OG | 145 OG | 175 OG | 230 OG | 280 OG |
|-------------------------------|--------------------------------|-----------------------|-----------------------|-----------------------|-----------------------|-----------------------|-----------------------|-----------------------|-----------------------|-----------------------|
| Base frame & tank | powered coat RAL9005, black | Folded sheet steel | Folded sheet steel | Folded sheet steel | Folded sheet steel | Folded sheet steel | Folded sheet steel | Folded sheet steel | Folded sheet steel | Folded sheet steel |
| Weight (approx.) | kg | 610 | 680 | 720 | 840 | 1160 | 1760 | 1970 | 2000 | 2350 |
| Length | mm | 1420 | 1560 | 1620 | 1790 | 2120 | 2503 | 2944 | 2600 | 2700 |
| Width | mm | 960 | 960 | 960 | 960 | 960 | 1116 | 1120 | 1120 | 1080 |
| Height | mm | 1100 | 1150 | 1230 | 1270 | 1580 | 1756 | 1910 | 1910 | 1900 |
| Retention basin | code | w/o | w/o | w/o | w/o | w/o | w/o | w/o | w/o | w/o |
| Battery & isolator | | INC | INC | INC | INC | INC | INC | INC | INC | INC |
| Oil extraction pump | | INC | INC | INC | INC | INC | INC | INC | INC | INC |
| Integrated fuel tank capacity | ltr | 160 | 160 | 160 | 160 | 160 | 520 | 520 | 520 | 520 |
| Fuel tank gauge | ltr | INC | INC | INC | INC | INC | INC | INC | INC | INC |

| Model | DPS | 25 OG | 35 OG | 50 OG | 65 OG | 110 OG | 145 OG | 175 OG | 230 OG | 280 OG |
|-------------------|------|-------|-------|-------|-------|--------|--------|--------|--------|--------|
| Base & tank model | code | T1 | T1 | T1 | T1 | T1 | T2 | T2 | T2 | T2 |
| Length A | mm | 1420 | 1560 | 1620 | 1790 | 2120 | 2503 | 2944 | 2600 | 2700 |
| Width B | mm | 960 | 960 | 960 | 960 | 960 | 1116 | 1120 | 1120 | 1080 |
| Height C | mm | 1100 | 1150 | 1230 | 1270 | 1580 | 1756 | 1910 | 1910 | 1900 |

Open Set -Frame T1



Open Set -Frame T2



DEUTZ Corporation
 3883 Steve Reynolds Blvd. | Norcross, GA 30093 USA
 Phone: (770) 564-7100 | E-mail: info.usa@deutz.com
 www.deutzamericas.com

